

Introduction

Thank you for purchasing our faucet. The faucet you have purchased is crafted out of the highest quality nickel, brass and stainless steel. Each and every faucet was tested and carefully inspected by hand before delivering to our retailers.

Please read the instructions carefully to prevent any malfunction and damages to your plumbing and property.

Tools

The tools below are required to complete the installation. Some may not be needed depending on the model of the faucet that you are installing. For additional information, check with your local hardware store on the requirements for your installation. **(NOT PROVIDED)**



Philips Screwdriver



Thread Seal Tape



Flashlight



Pliers



Adjustable Wrench



Safety Glasses

Specification

1. Turn off all water supply lines and drainage lines.
2. Clean the installation area thoroughly and remove any excess debris.

DESCRIPTION

- Flexible supply lines with 3/8" or 9/16" compression fittings

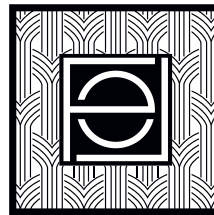
FLOW

Kitchen Faucet:

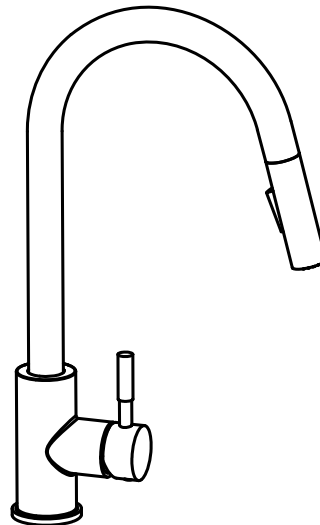
- North America: 1.8 gpm max (6.8L/min) at 60psi

Daily maintenance

1. Dip the cloth into mixture of white vinegar and water (50/50) and scrub to remove hard-water spots.
2. Check aerator (if present) regularly for calcium build up are when water stream is not optimum.
3. DO NOT use caustic cleaning products as the use will break down finish and will void the product warranty.
4. Acceptable cleaners include mixture of white vinegar and water (50/50) or mild non-abrasive liquid detergents.
5. If the water pressure appears to be less than optimum remove, inspect, clean or replace aerator.



Sensor Pull Out Kitchen Faucet



FAK-306



Sensor Faucet User Manual

1. Note:

- a. when installing the battery box, please avoid direct contact with water and don't install it in a humid place;
- b. When the battery bracket is installed, the arrow on the surface faces upward, and the installation height should not be higher than 15cm from the cabinet floor;
- c. The battery needs to be installed according to the requirements of the positive and negative poles, and cannot be installed reversely.

2. How to use touch :

1. Open the faucet by using the handle;
2. Tap the touchable area of the faucet to control the state of the water outlet switch of the faucet;
3. The faucet will automatically shut down after the water is discharged for more than 3 minutes to save water .

Note:

- a. If the faucet is not used for a long time, the handle should be closed.
- b. When the handle is closed, the touch switch will still operate, but there is no water coming out. This is a normal phenomenon.
- c. When the battery power of the touch module is low or exhausted, the touch switch will remain on. You can control the handle to use the faucet directly. The touch function will resume after replacing the battery.

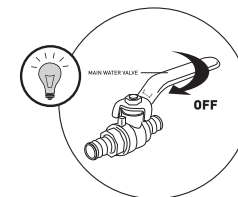


Notice

Notes before installation :

1. Please check that all components are present.
2. Before installation ensure that all feed lines are clear of debris and on/off valve is present.
3. Ensure water pressure is between 20-125 PSI (includes combination of hot and cold feed lines).
4. Pictures in the manual are general in content and may not represent exactly your purchased faucet. If you are having difficulties please contact a professional plumber.
5. If you will be away from home for an extended period you should shut off the main water.

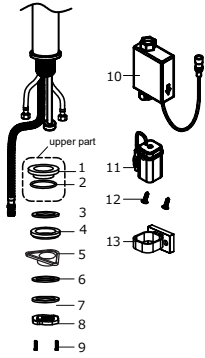
Before you begin



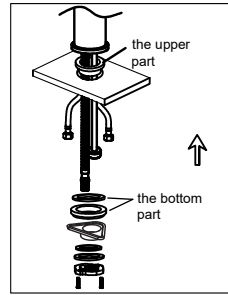
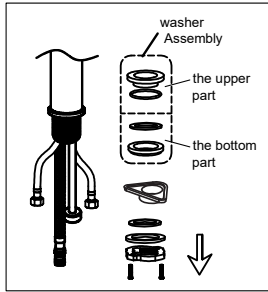
Helpful Hint:

Always use the supplied rubber washers on water supply connectors to prevent leaking. Also, always use an adequate amount of plumber's putty or thread sealing tape to prevent connectors from leaking.

Pull out Kitchen Faucet

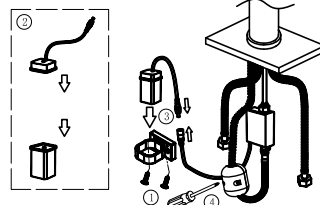
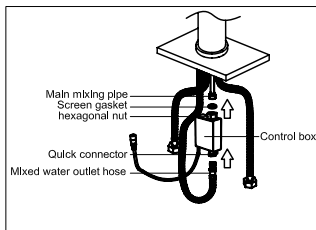


No.	Name of the Part	Qty
1	upper washer	1
2	oring	1
3	flat washer	1
4	bottom washer	1
5	Plastic cover	1
6	nbr washer	1
7	metal washer	1
8	metal lock nut	1
9	Screw	2
10	Control box	1
11	Battery box	1
12	Screw	2
13	Battery holder	1



1.Remove locking-nut,metal and rubber washer and hose connector if installed.

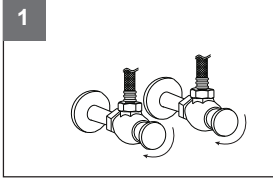
2. Install faucet through center hole,re-install rubber and metal washer followed by the lock-nut.Re-install hose connector if removed insuring small rubber washer is also installed.Using a screwdriver tighten the lock-nut screws so that the faucet is secure and will not twist.



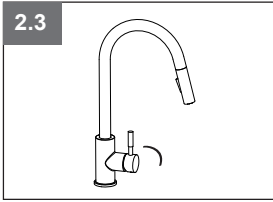
3.Install the control box on the mainbody,tighten the hexagonal nut of the control box with the hot and cold flexible hoses of the faucet body, insert the hot and cold flexible hoses connector into the quick-in connector of the control box;

4. ①. Fix the battery holder on the wall with screws in an appropriate position;
②. Unscrew the battery box cover, remove the box cover, put the battery into the box and lock it tightly;
③. Put the battery box into the battery holder, and put the connecting wire ends of battery box with the connecting wire ends of control box together.
④. On the spray side of the hose, measure 15" down from the body of the faucet.Install the hose weight kit at this point.

Testing

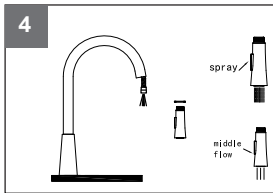


1. Turn on water supplies and check all connections for leaks. If there are leaks, turn off water supplies and check to see if proper washers were used along with proper thread sealing tape.

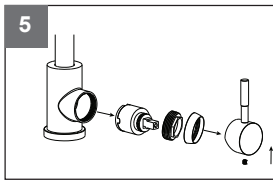


2. Turn handles up and down or left and right (where applicable) and test both cold and hot water connections.

3. For models with dual spray selection, make sure to test both types of spraying thoroughly.



4. Remove aerator and let both cold and hot water run for one minute.This will remove any debris in the system that might otherwise clog the aerator.



6. Use a pair of pliers to remove the cartridge by gently pulling upwards. Sometimes there is a metal ring that needs to be removed before the cartridge can be removed.

Warranty

The warranty does not apply to the following cases:

1. Failure to provide purchase receipt.
2. Material damage caused by carelessness or during transport.
3. Due to improper installation.
4. Alterations or repairs by un-authorized persons.
5. Damaged of the nickel plating because of unauthorized cleaning methods (hard and heavy deter-gent).

ACCESSORIES CATEGORY	WARRANTY PERIOD (FUNCTION,APPEARANCE)
CARTRIDGE	SHOWER SET (THERMOSTATIC/HOT & COLD) ② YEARS
	BATHTUB FAUCET/POTFILLER ② YEARS
	BASIN/KITCHEN FAUCET ⑤ YEARS
SHOWER/KITCHEN FAUCET TUBE	① YEAR
SHOWER HOSE	① YEAR
KITCHEN FAUCET SPOUT	① YEAR
SHOWER HEAD, HAND SHOWER	① YEAR
SHOWER/KITCHEN/BASIN MIXER BODY (CHROME COLOR)	⑤ YEARS
SHOWER/KITCHEN/BASIN MIXER BODY (BRUSH NICKEL,MATTE BLACK,BRUSH GOLD, GUN BLACK)	② YEARS

Troubleshooting

Problem	Possible Cause	Corrective Action
Water does not shut off completely.	1.O-ring is not seated correctly or worn. 2.Cartridge may be defective.	1.Reseat or replace O-ring. 2.Replace cartridge
Leaks at waterline connection.	1.Worn or broken washer.	1.Replace washer.
Leaks from handle.	1.Cartridge may come loose. 2.Cartridge may be defective.	1.Reseat cartridge tight. 2.Replace cartridge.
Leaks at hose connection.	1.Hose connection is loose.	1.Tighten hose. 2.Replace hose.
Leaks at shower valve connection	1.Connection may come loose or not sealed completely 2. Defective shower valve inlet or outlet connector.	1.Check connections. 2.Replace valve body.
Diverter knob does not work	1.Diverter cartridge may be defective.	1.Replace cartridge.
Low flow	1.Check for water pressure problems. 2.Aerator may be dirty or clogged.	1.Clean or replace the aerator. 2.Remove water flow restrictor if available. 3.Install booster or pump (if applicable).

Accessories parts if need

